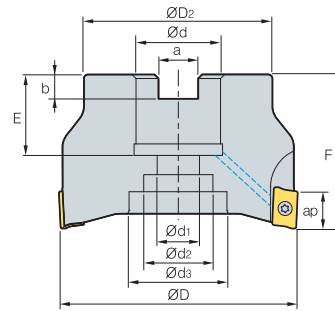
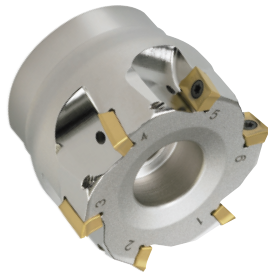


AMC(M)1500S



AA 90°
 • AR: 9°~13°
 • RR: -14°~5°

(mm)

Designation		ØD	ØD2	Ød	Ød1	Ød2	Ød3	a	b	E	F	ap		
AMCM	15040HS	5	40	34	16	9	14	-	8.4	5.6	19	40	9	0.22
	15050HS	6	50	42	22	11	18	-	10.4	6.3	21	40	9	0.34
	15063HS	8	63	49	22	11	18	-	10.4	6.3	21	40	9	0.57
AMC (AMCM)	15080HS	10	80	57	25.4 (27)	14	25	35	9.5 (12.4)	6 (7)	24 (23)	50	9	1.10
	15100HS	12	100	67	31.75 (32)	18	26	42	12.7 (14.4)	8 (8)	32 (26)	63	9	2.10

() Metric size

Available inserts

APMT-MA APMT-ML APMT-MM



Designation	Cermet		Coated												Uncoated		page	
	CN2000	CN30	NCM325	NC5330	NCM635	NCM645	PC2505	PC2510	PC3600	PC3700	PC6510	PC9530	PC9540	PC5300	PC5400	G10		H01
APMT	0903PDFR-MA																●	E05
	090308PDFR-MA																	
	0903PDER-ML													●	●			
	090308PDER-ML													●	●			
	0903PDSR-MM				●			●	●	●	●			●	●			
	090308PDSR-MM				●				●	●				●	●			
	090312R-MM								●	●				●	●			
	090316R-MM				●				●	●				●	●			
	090320R-MM								●	●				●	●			

Available arbors

Designation	Ød	NC arbors	
AMCM	15040HS	16	BT□□-FMC16-□□
	15050HS	22	BT□□-FMC22-□□
	15063HS		
AMC (AMCM)	15080HS	25.4	BT□□-FMA25.4-□□
		27	BT□□-FMC27-□□
	15100HS	31.75	BT□□-FMA31.75-□□
		32	BT□□-FMC32-□□

Parts

Specification		
Ø40~Ø100	FTKA02565S	TW08S

Available inserts E05 Available arbors and bolt E400~E402